

She Persisted, The Musical

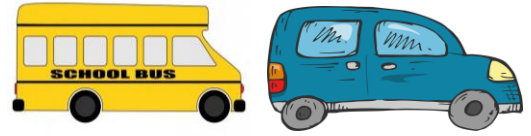
Social Story



We are going to *She Persisted* at Atlantic Theater Company.

When are we going?

We will see the show on Friday, March 6th or Saturday, March 7th. We might come by bus, subway, car, or by walking. The show starts at 10:30 A.M., but we can enter the theater starting at 10:00 A.M.



Where are we going?

The show will be at the Linda Gross Theater. The address is 336 W 20th Street.



Bathrooms

There are bathrooms on the bottom floor of the theater. We can take the stairs or the elevator to get there.



Ushers

When we get to the theater, we will be greeted by ushers and volunteers from Atlantic Theater Company. We will pick up our tickets from the box office.



Theater

We will go into the theater to find seats. There is no assigned seating, which means we can choose where we want to sit. A seating chart with more information is at the end of this story.



Stage

The show will happen on the stage. We can look at the stage but cannot walk on it or touch it. We can walk around the rest of the space if we need to. When the show starts, the lights will dim which means it will get a little darker, but it will never be completely dark.



Lights

There will be many different lights with different colors that change during the show. If we don't like the lights, we can cover our eyes, look away, or take a break.



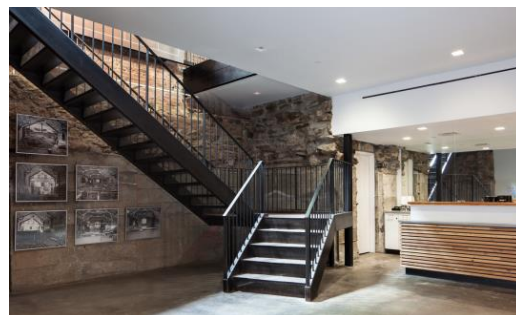
Sound

Since this show is a musical, there will be singing and a few sound effects. If the sounds are too loud, we can cover our ears, use headphones or take a break. Staff will have headphones we can use if we need them.



Quiet Space

If we need a break, we can go to the lobby to move around or sit down. It will be quiet in the lobby. There will be an activity area with coloring sheets and fidgets. There will also be a live video of the show, so we don't have to worry about missing out on the action.



Meet the Cast



Auberth Bercy
Ruby Bridges/ Bailey



Jianzi Colón-Soto
Sonia Sotomayor/ Juno



Amanda Corday
Dr. Virginia Apgar/ Sally Ride



Amber Jaunai
Naomi



Cynthia Nesbit
*Harriet Tubman/
Florence Griffith-Joyner*



Heather Sawyer
Ms. Chan/ Time

Here are the historical figures you will see in the show:

Sonia Sotomayor is a United States Supreme Court Justice. She is from the Bronx and the first and only Latina woman on the Court.



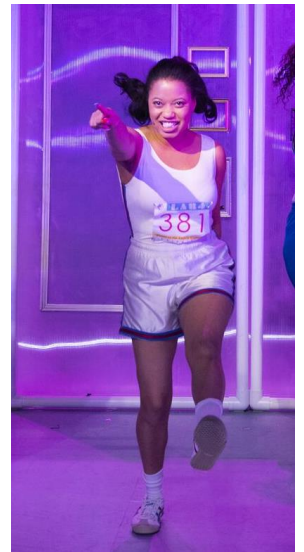
Dr. Virginia Apgar was a doctor most known for creating the “Apgar score” a quick way to check a newborn’s health once they are born.



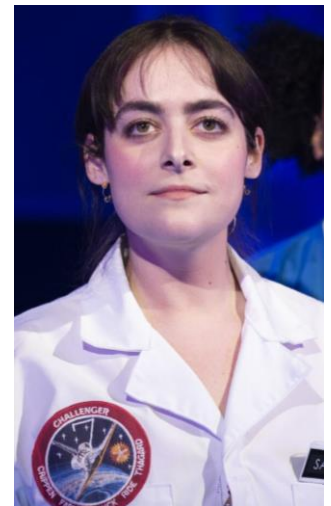
Harriet Tubman was an African-American anti-slavery worker. She escaped slavery and then helped more than 300 hundred slaves escape using the Underground Railroad.



Florence Griffith Joyner was a track and field athlete. She won three gold medals at the Olympics and is considered the fastest woman of all time.



Sally Ride was a physicist and astronaut who became the first woman in space in 1983.



Ruby Bridges is an activist. She is known for being the first black child to attend an all white school in the South during fight desegregate schools.



In the musical...

This is a story about Naomi who travels through time to learn about women from history:

Lights up!

The story starts with Naomi's 4th grade class on a field trip to the "National Museum of Women in History." They are about to visit the "History Through Time" exhibit.

The teacher Ms. Chan tells the class they will need to write an essay about how the persistent women in the exhibit have inspired them to follow their dreams. Naomi doesn't know how she will write the essay since she messed up her essay in front of the whole class the day before.



Time Travel:

All of a sudden the character "Time" shows up and takes Naomi on a trip to the past. In this play Time is a character played by an actor.



Naomi meets Sonia Sotomayor:

Time takes Naomi to 1961 where Naomi meets a young Sonia Sotomayor who is looking for her *arroz con dulce*, a dessert. Sonia says she's a great detective and can solve any problem.

When Sonia is told she can't be a detective because it's too dangerous, she's disappointed but comes up with another solution: to be a lawyer. Naomi learns to find another solution.



Naomi meets Dr. Apgar:

Time takes Naomi to the 1930s where they meet Dr. Apgar. She became a doctor in a time when most women couldn't even go to college.

She saved a baby's life by noticing it needed oxygen. Dr. Apgar sings about her discoveries she made as a doctor. **Naomi learns to stay curious.**



Naomi meets Harriet Tubman:

Naomi is transported to the time of Harriet Tubman. Harriet helped people escape slavery in the south by guiding them north to Canada. They hear dogs in the distance and have to run away.

Harriet sings a song about how she has to have hope and believe that people are good.

Naomi learns she needs to have hope and to find her own path.



Naomi meets Sonia at Princeton:

Time transports Naomi to Princeton University in 1974 where Sonia is standing nervously in front of the President of Princeton's door. She wants to tell him there are not enough Puerto Rican and Chicano students at Princeton. Naomi encourages her to be herself and stand up for what she believes. Sonia decides to try.

Even though the president says no, Sonia says they haven't changed things YET and promises to find another solution. Eventually a change was made. **Naomi learns she needs to be persistent.**



Talking with Time:

Even though Naomi has seen so many amazing women she still doesn't know how to write her essay. Time suggests Naomi talk to her teacher Ms. Chan. **Naomi learns she needs to learn to love herself even when she fails.**



Naomi meets Florence Griffith Joyner:

Naomi meets the olympic runner Florence Griffith Joyner. Florence didn't win the first time, she had to train hard.

Florence sings a song about how you need to run your own race, have fun, and be yourself. **Naomi learns it's about trying to be your personal best.**



Naomi meets Sally Ride:

Naomi meets Sally Ride who is training to be an astronaut. **Naomi learns that it's important to try new things, make mistakes and dream.**

Naomi is still worried about her essay and gets frustrated with Time. Naomi thinks she is too young to do anything important.



Naomi meets Ruby Bridges:

Transported to New Orleans in 1960, Naomi meets Ruby Bridges who is giving herself a pep talk as she waits to go to school. Ruby is in first grade and is the first African-American student to go to an all white school. Everyday on her way to school mobs of white people throw rocks and scream horrible things at her because they don't want her to go to the same school as the white students.



Ruby tells Naomi that sometimes she just wants to stop. **Naomi learns that sometimes you need to be brave, hold your head up high and walk on.**

Naomi says that is the bravest thing she's ever seen and then she sings about how she's learned she doesn't need to be perfect she just needs to try.



Naomi returns to the museum:

Time returns Naomi back to her class.

Naomi asks Ms. Chan for help with her essay. Then she tells Ms. Chan everything she has learned.

Ms. Chan tells Naomi that it doesn't seem like she needed her help on the essay after all.



After the show...

The actors will take a bow, and the audience will clap for them. If the clapping is too loud, we can cover our ears or go to the lobby of the theater.



We will exit through the lobby of the theater.



Thank you for joining us at Atlantic Theater Company!


A seating guide to the Linda Gross Theater

Linda Gross Theater Seating Chart –

 L1	L2	L3	L4	L5	L6	L7	L8	L13					L14	L15	L16	L17 		
K1	K2	K3	K4	K5	K6	K7	K8	K9	K14					K15	K17	K17	K18	K19
J1	J2	J3	J4	J5	J6	J7	J8	J9	J10	J11	J12	J13	J14	J15	J16	J17	J18	J19
H1	H2	H3	H4	H5	H6	H7	H8	H9	H10	H11	H12	H13	H14	H15	H16	H17	H18	
G1	G2	G3	G4	G5	G6	G7	G8	G9	G10	G11	G12	G13	G14	G15	G16	G17	G18	
F1	F2	F3	F4	F5	F6	F7	F8	F9	F10	F11	F12	F13	F14	F15	F16	F17	F18	
E1	E2	E3	E4	E5	E6	E7	E8	E9	E10	E11	E12	E13	E14	E15	E16	E17	E18	
D1	D2	D3	D4	D5	D6	D7	D8	D9	D10	D11	D12	D13	D14	D15	D16	D17	D18	
C1	C2	C3	C4	C5	C6	C7	C8	C9	C10	C11	C12	C13	C14	C15	C16	C17	C18	
B1	B2	B3	B4	B5	B6	B7	B8	B9	B10	B11	B12	B13	B14	B15	B16	B17	B18	
A1	A2	A3	A4	A5	A6	A7	A8	A9	A10	A11	A12	A13	A14	A15	A16	A17	A18	

STAGE

 IF YOU NEED TO STAND, MOVE AROUND OR NEED A QUICK EXIT. THIS ROW IS ALSO WHEELCHAIR & COMPANION ACCESSIBLE.

 CLOSE TO THE ACTION (ACTORS MAY GO IN THE AISLES)

 AWAY FROM DIRECT LIGHTS & SPEAKERS

 EASY EXITS

 WHEEL CHAIR & COMPANION

NOTE: SEATING IS GENERAL SEATING AND NOT ASSIGNED. THE THEATER WILL OPEN 30 MINUTES PRIOR TO THE SHOW TIME.